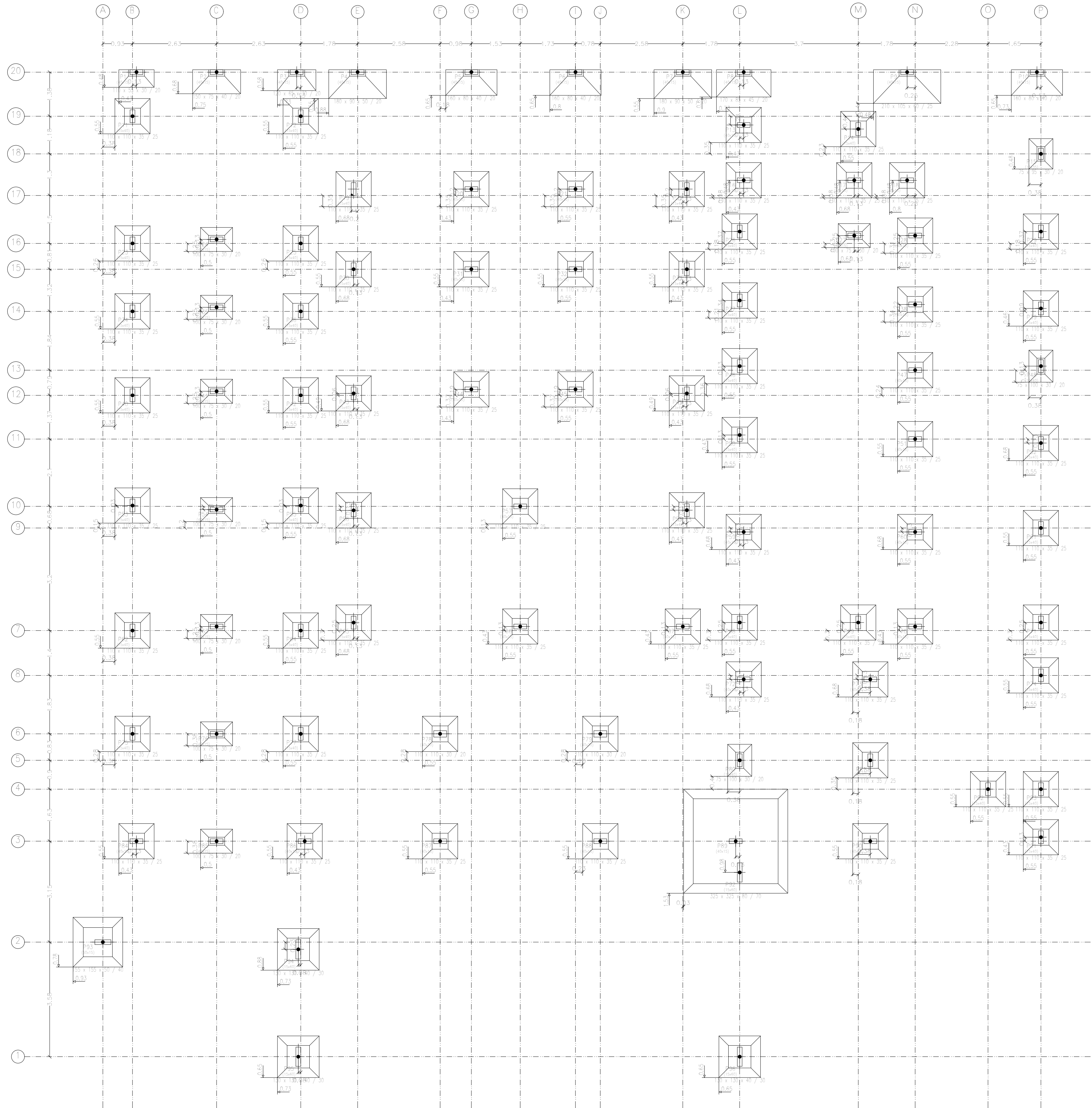
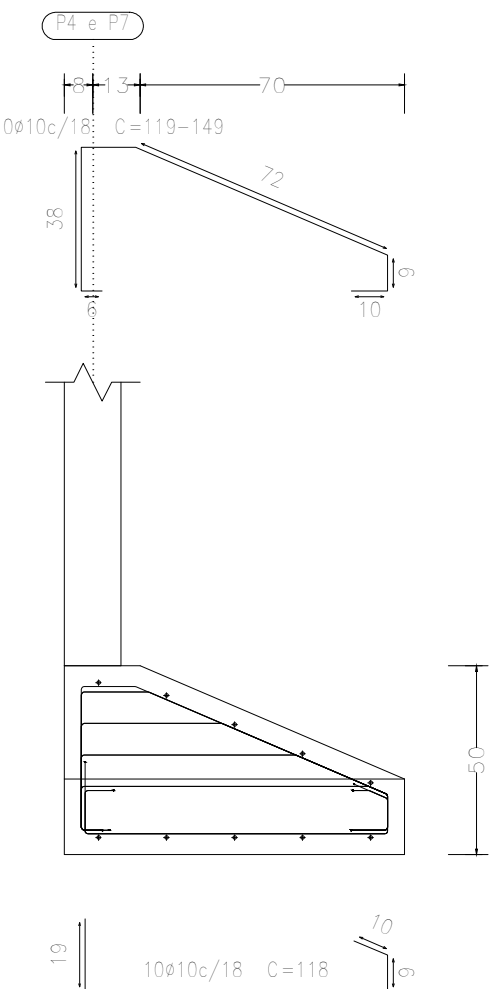
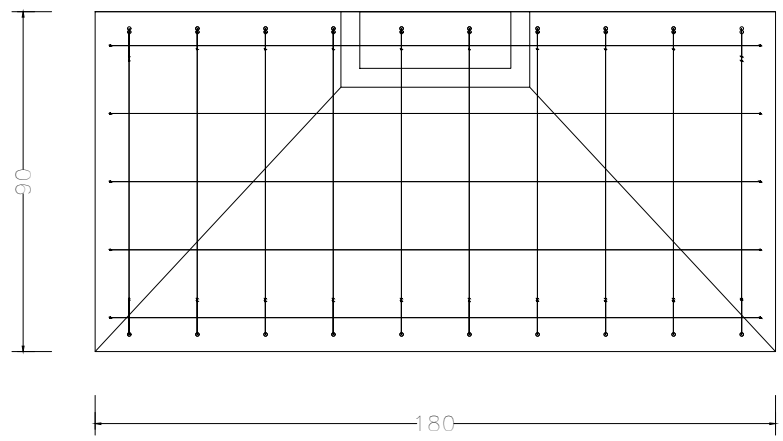
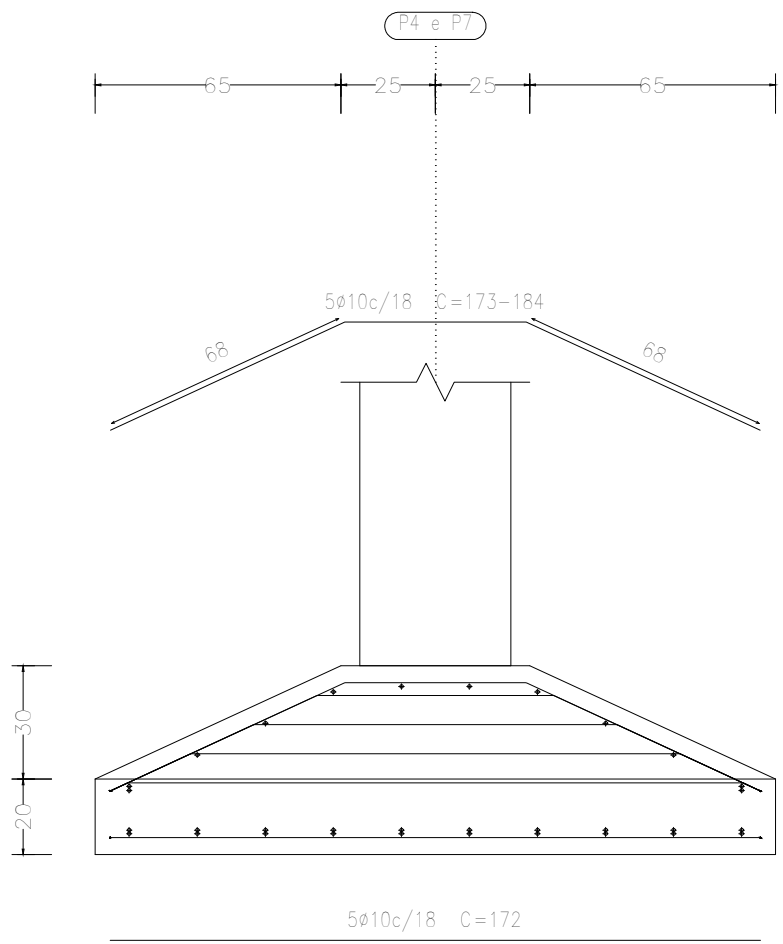


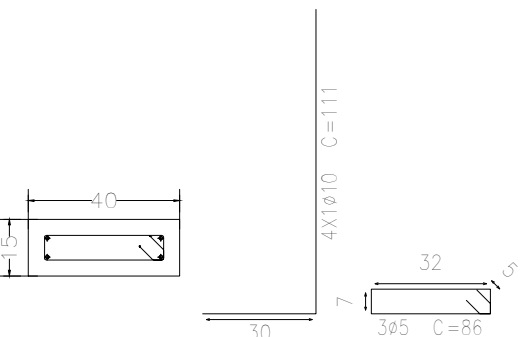
Fundação  
Piso  
Escala: 1/75



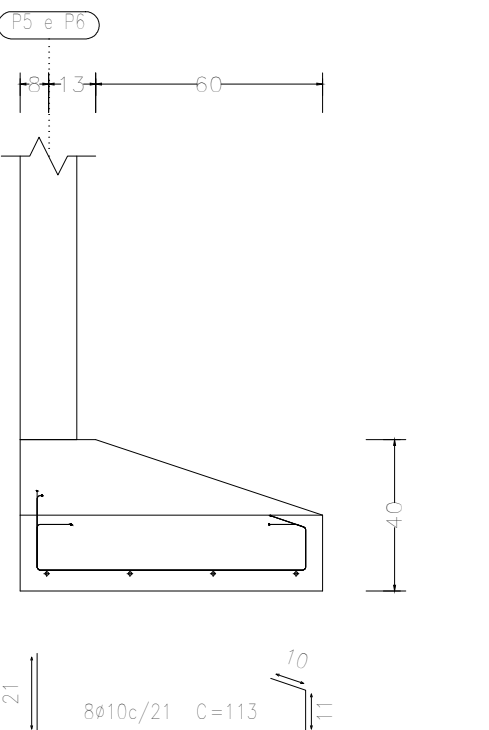
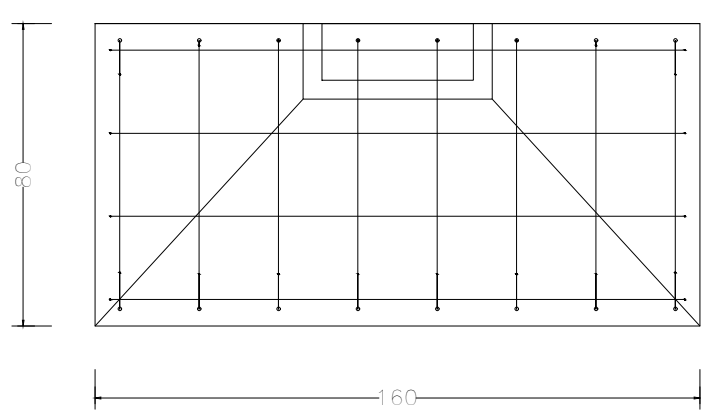
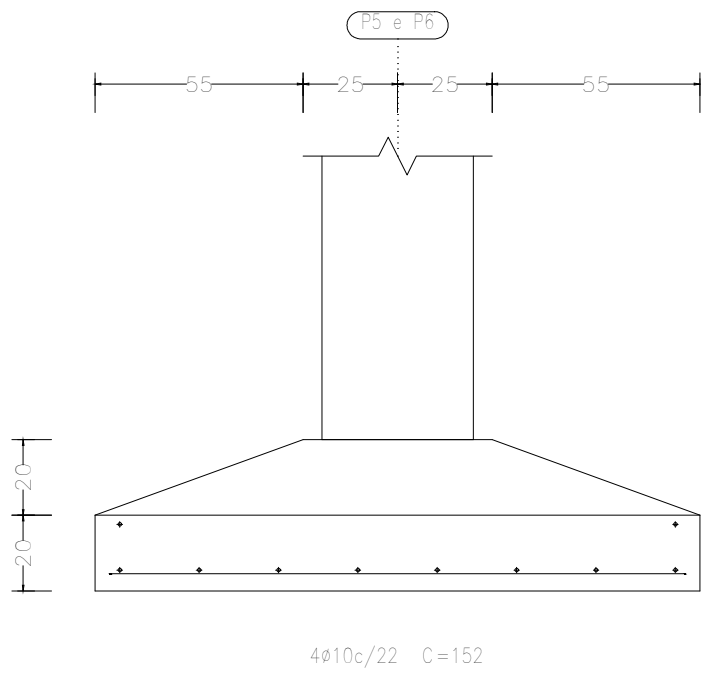
P4 e P7



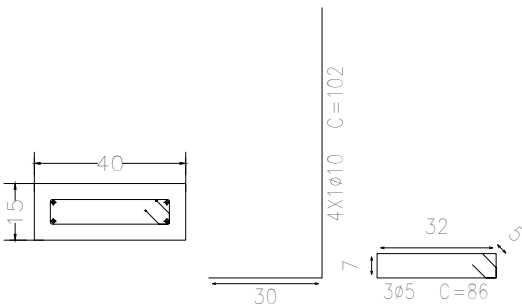
P4 e P7



P5 e P6



P5 e P6



Complexo Municipal de Saúde		Data: 25/10/2023	
Local: Avenida Júlio Campos, Quadra 03		Número de desenho:	
Complexo Municipal de Saúde		Escala: Indicada	
Eduarda Rompanelli Tosetto Engenheira Civil Número do CREA: 122050.3037		Data: 25/10/2023	